



Joint project partner



SIGNATURE

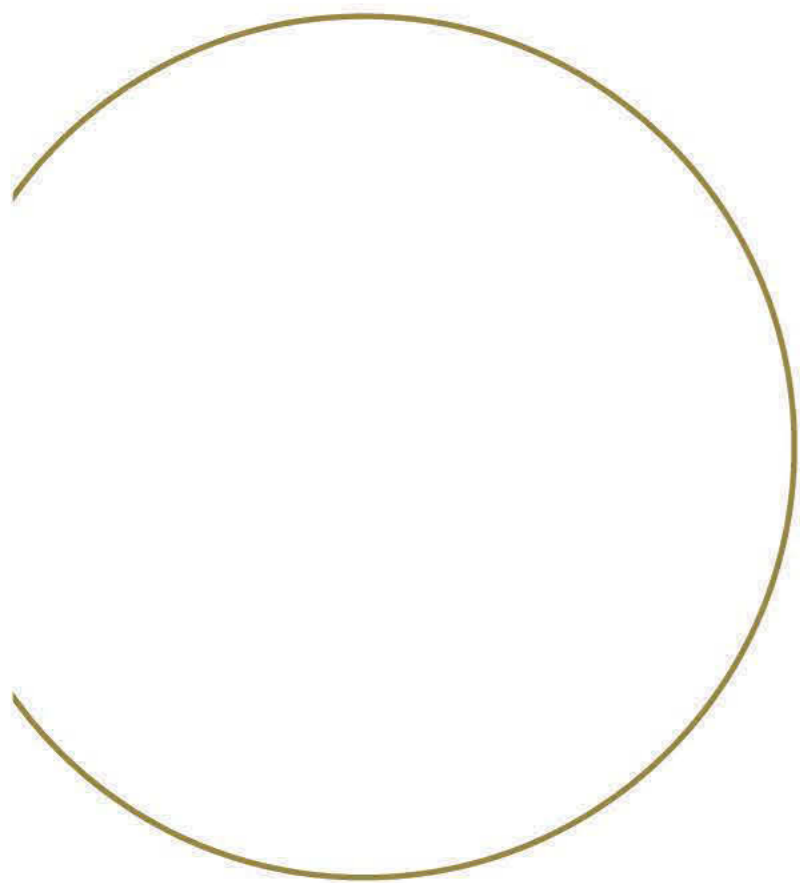
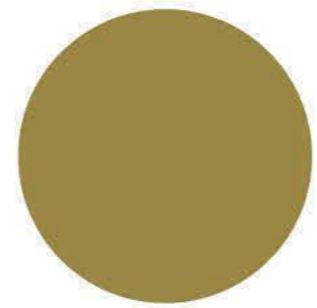
THE ART OF LIFESTYLE

Sales Office: V2 Realty, Plot - 373, Daman-Chala Road, Vapi - 396191, Gujarat, India.

Registered Office: V2 Realty, Office No. 3 & 4, Mancharam Apartments, Nehru Street, Vapi - 396191, Gujarat, India.

Call: +91 260 6533200 | **Email Id:** info@v2life.in | **Web:** www.v2life.in

A PROJECT BY V2 REALTY





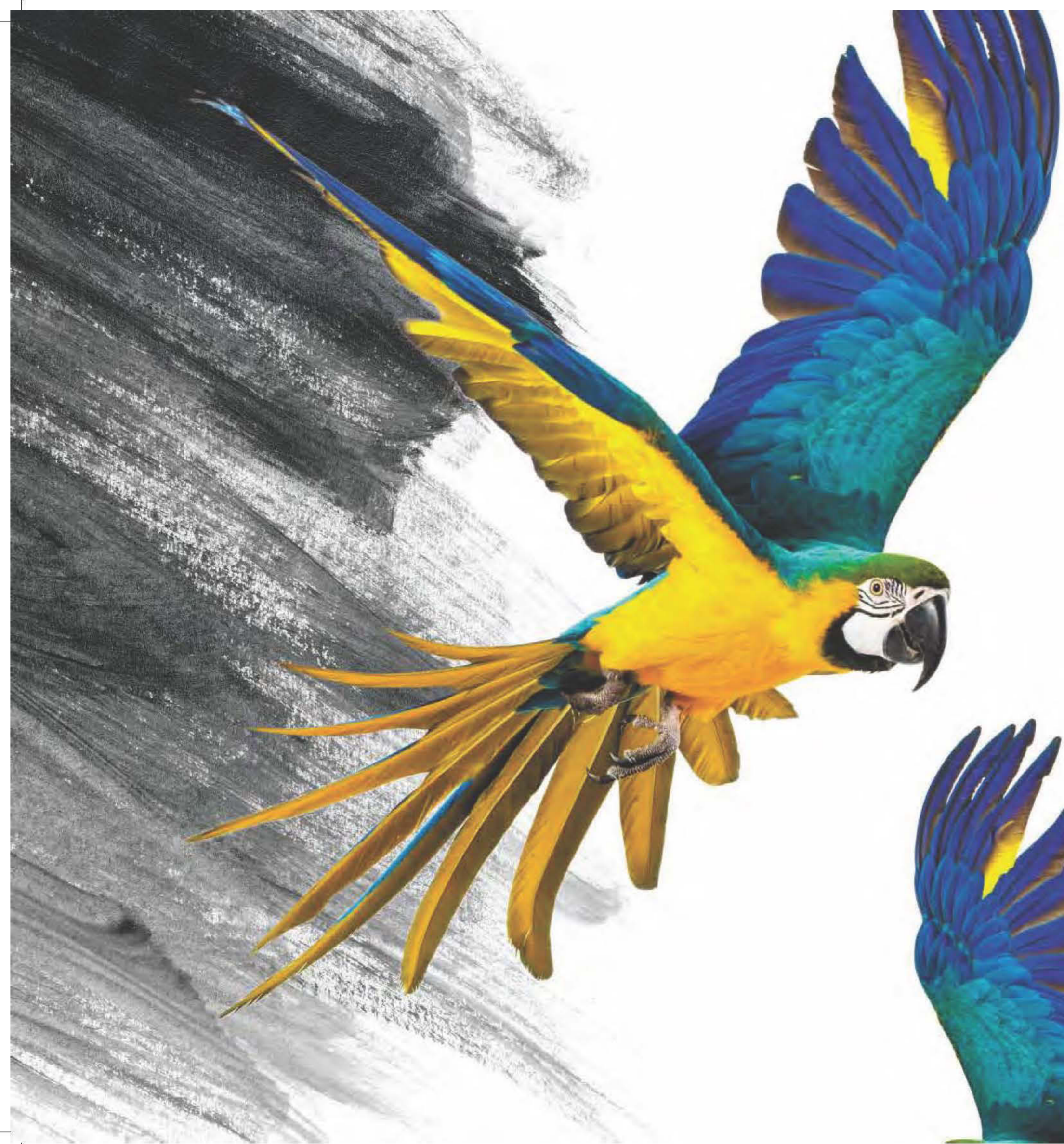
A NEW CANVAS EVOLVES
PAINTED WITH HUES OF LUXURY





WHEN THE INSPIRATION IS AROUND
AND WITHIN A DESIGNER AMBIENCE





A RENDITION OF HAPPINESS AND
EXCITEMENT TOUCHES YOUR HEART





WELCOME
TO THE ART
OF LIFESTYLE

A project by



SIGNATURE

THE ART OF LIFESTYLE

• DAMAN - CHALA ROAD, VAPI •

THE TRUE ART OF LIVING, BUILT TO INSPIRE.



A CONTEMPORARY
LIVING EXPERIENCE
AT VAPI

Let life be a work of art; and experiences a work of imagination. Live a lifestyle inspired by art, designed by finesse at V2 Signature – A Contemporary Living address at Vapi, envisioned to give the canvas to enjoy and revel in the true signature style of luxury, none at par.

Project Hallmarks: Residential

- State-of-the-art 3 & 4 BHK Spacious Residences •
- Two G + 9 Towers with Modern Architecture •
- Designed with International Level Finishes •
 - Double Height Magnificent Lobby •
 - 20,000 Sq. Ft. Terrace Recreation •
- Basement + Ground Level Parking Spaces •





●

**A SIGNATURE LOCATION
THAT DRAWS THE PERFECT
PICTURE OF ADVANTAGE**

• DAMAN-CHALA ROAD, VAPI •

Location &
Connectivity





A HARMONIOUS MIX OF COMFORT, CONNECTIVITY AND CONVENIENCE.

A travellers' paradise, and the location where romance, excitement and nature-seeking takes a whole new level, Daman welcomes you to a rendezvous with calm, peace and internal bliss sitting right in your luxurious embrace. A location that highlights the pure need of indulgence in a signature-art style.



- Hariya Hospital - 5 kms
- Daman Airport - 6.7 kms
- Jampore Beach - 9 kms



- Vapi Railway Station - 1.7 kms
- National Highway 8 - 1.5 kms
- International Curriculum Schools - 1.5 kms
- Rofell College - 3 kms



ELEMENTS OF ART, FINE TUNED
INTO A PICTURESQUE LIFESTYLE



Tastefully designed
Landscaped Garden
Spread Over 30,000 Sq. Ft.



A state-of-the-art
Clubhouse Admeasuring
10,000 Sq. Ft.



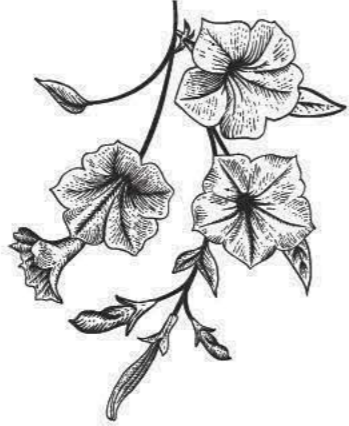
Artistic
Sky Recreation of
20,000 Sq. Ft. on terrace



**THE ART OF
REJUVENATION.
AT THE COURTYARD.**

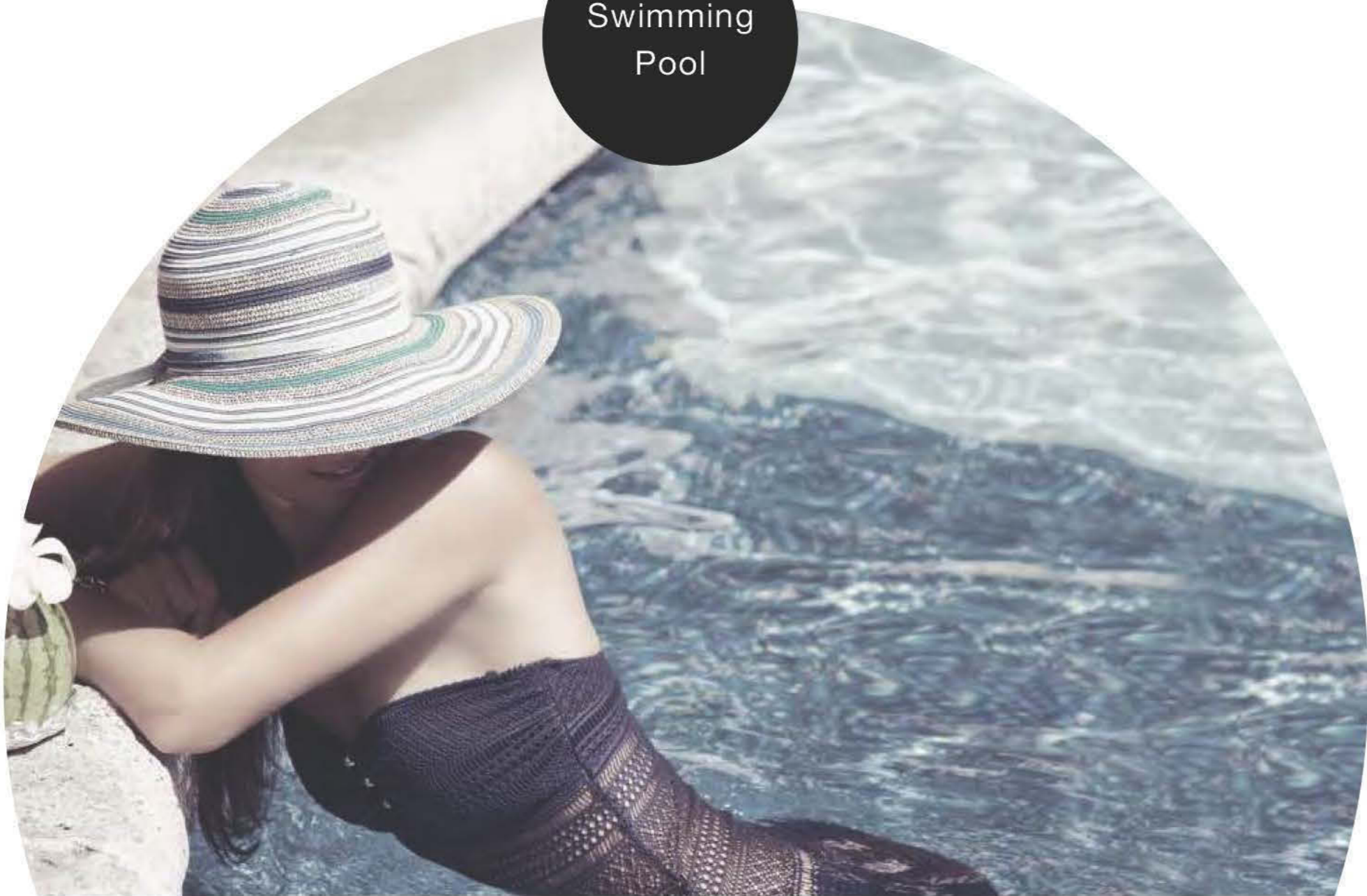


Ground Level Designer Landscaped Garden
spread over 30, 000 Sq. Ft.



DIVE INTO THE 70% PART OF OUR WORLD,
EMERGE 100% RELAXED & ENERGISED.

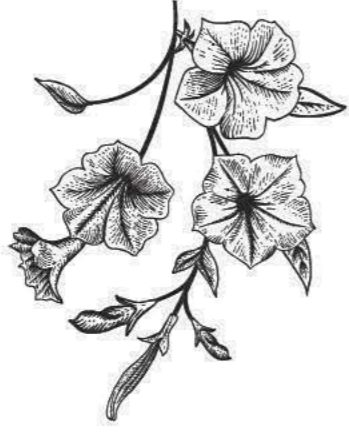
Swimming
Pool



LISTEN TO YOUR FAVOURITE SONG,
WHILE YOU JOG TOWARDS A HEALTHY LIFE.

Jogging
Track





PAUSE LIFE AMIDST MOOD LIGHTING & MANICURED TREES,
REPLAY THE FEEL FROM THE START.

Decorative
Landscaping



A PLACE FOR THE INNOCENT LAUGHTER,
A SPACE FOR INNOCENT CHILDHOOD TO ENJOY.

Children's
Play Area with
Toddler's Zone





**THE ART OF
RECREATION.**

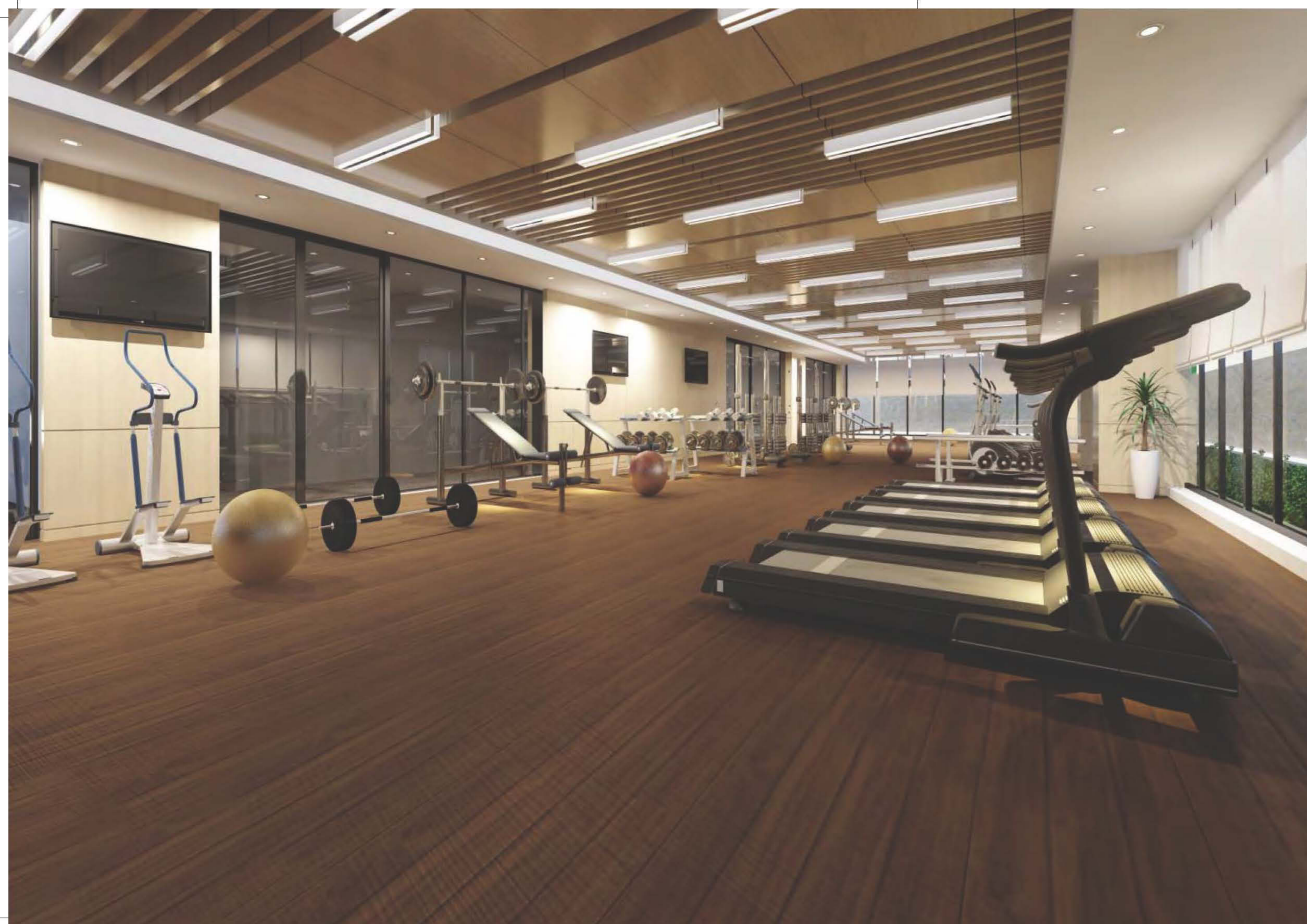


Elegant Clubhouse spread over 10, 000 Sq. Ft.



**THE ART OF
RECREATION.**

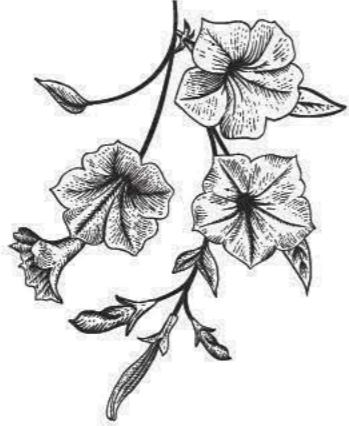
Elegant Clubhouse spread over 10, 000 Sq. Ft.



●
**RUN INTO YOUR REGIME,
BUILD YOUR STRENGTH
& WILL POWER.**

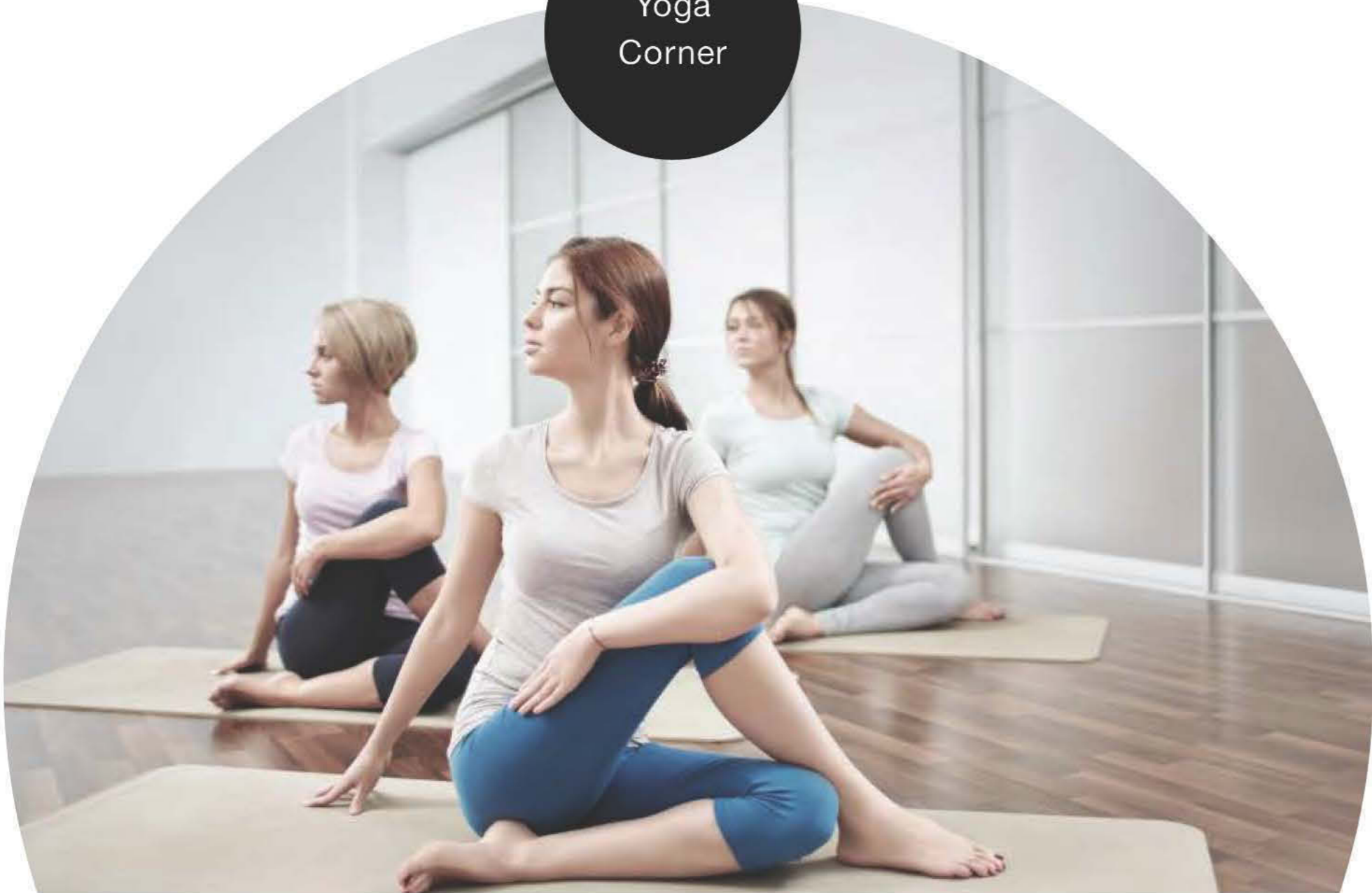
Well-equipped
AC Gym





**MIND, BODY & SOUL, MEET ALL THE THREE
IN A PERFECT STATE OF CONSCIOUSNESS.**

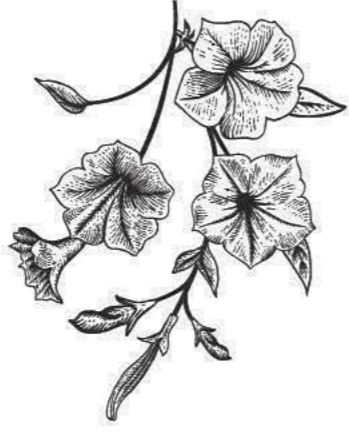
Yoga
Corner



**REFRESH, RELAX AND REPLENISH YOURSELF,
COME OUT A FRESHER YOU.**

Steam, Sauna
& Jacuzzi





TEST YOUR SKILLS OF PERFECTION,
IN SNOOKER, TABLE TENNIS, CHESS & CARROM.

Indoor
Games Room



DRIVE YOUR OPPONENT TO THE WALL,
TAKE YOUR GAME TO THE NEXT LEVEL.

Badminton
Court





Artist's Impression

●
**SOCIALIZE, CELEBRATE
AND SHARE, RELIVE THE
MOMENTS OF THE DAY.**

Banquet Hall
with 150 pax
capacity





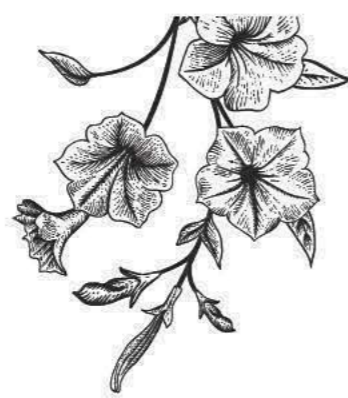
Artist's Impression



THE ART OF
ENJOYMENT.
AT THE SKY WORLD.

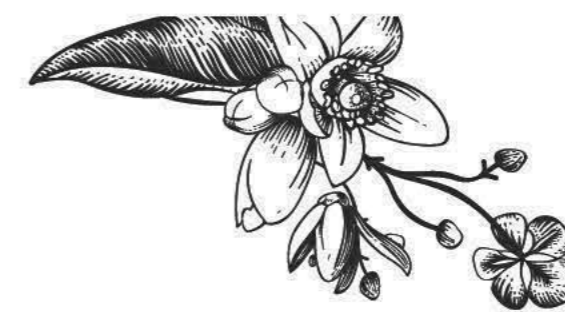


Roof-top Features spread across 20, 000 Sq. Ft.



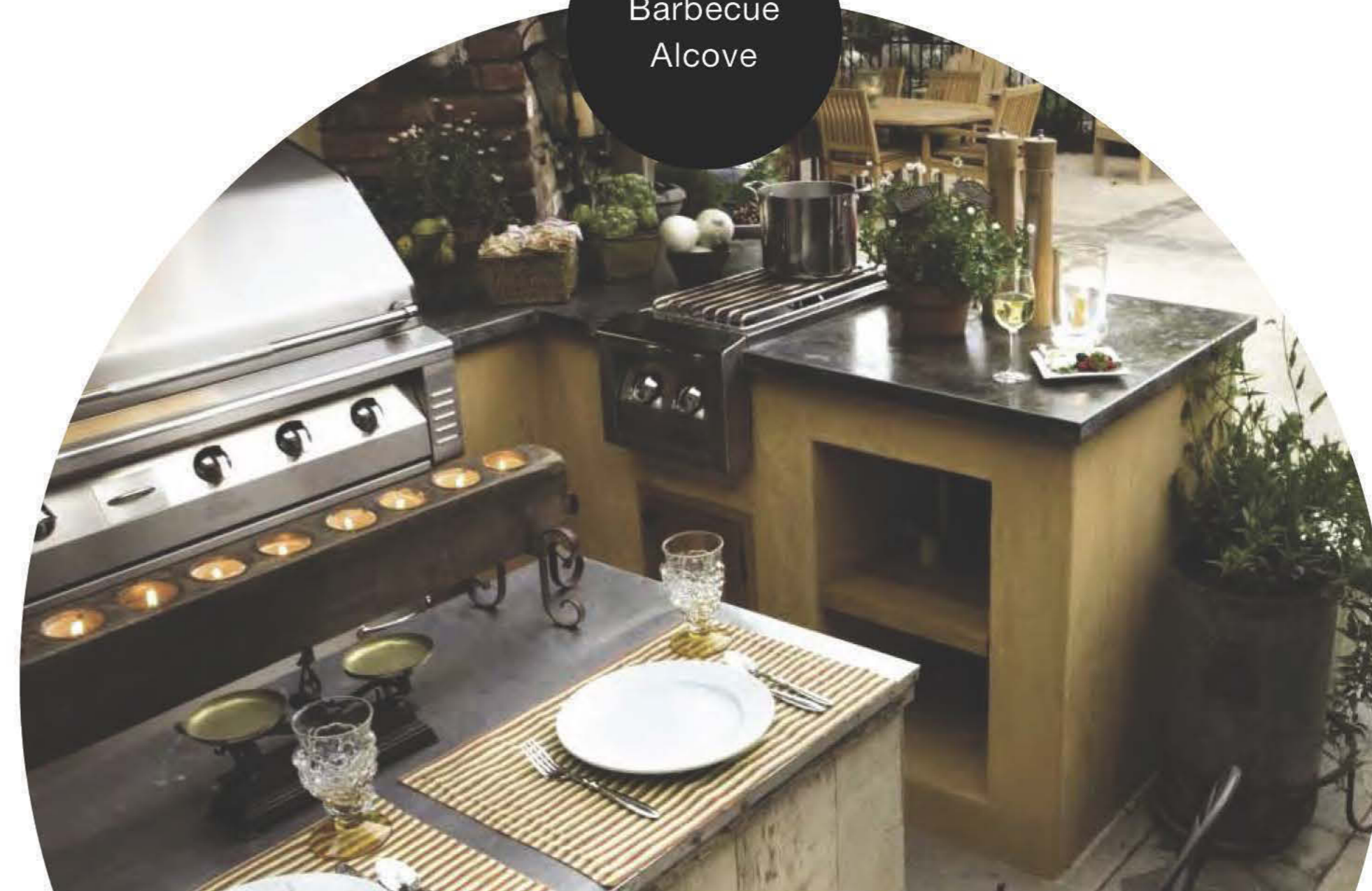
WHEN NATURE INSPIRES,
IT LEAVES YOU WITH AN EXPRESSION OF BLISS.

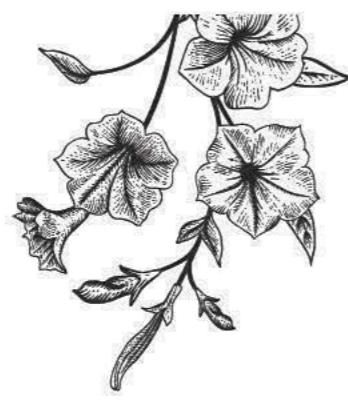
Decorative
Terrace Garden



TAKE YOUR FAMILY TO ENJOY THE SIZZLE,
AND THE CONVERSATIONS.

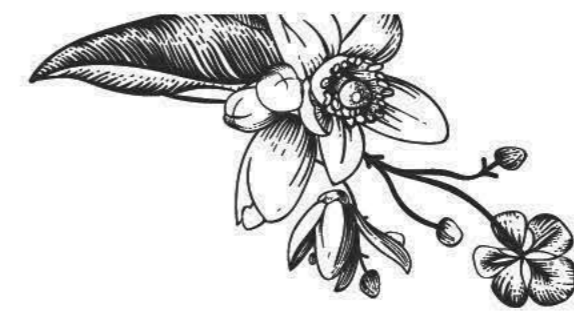
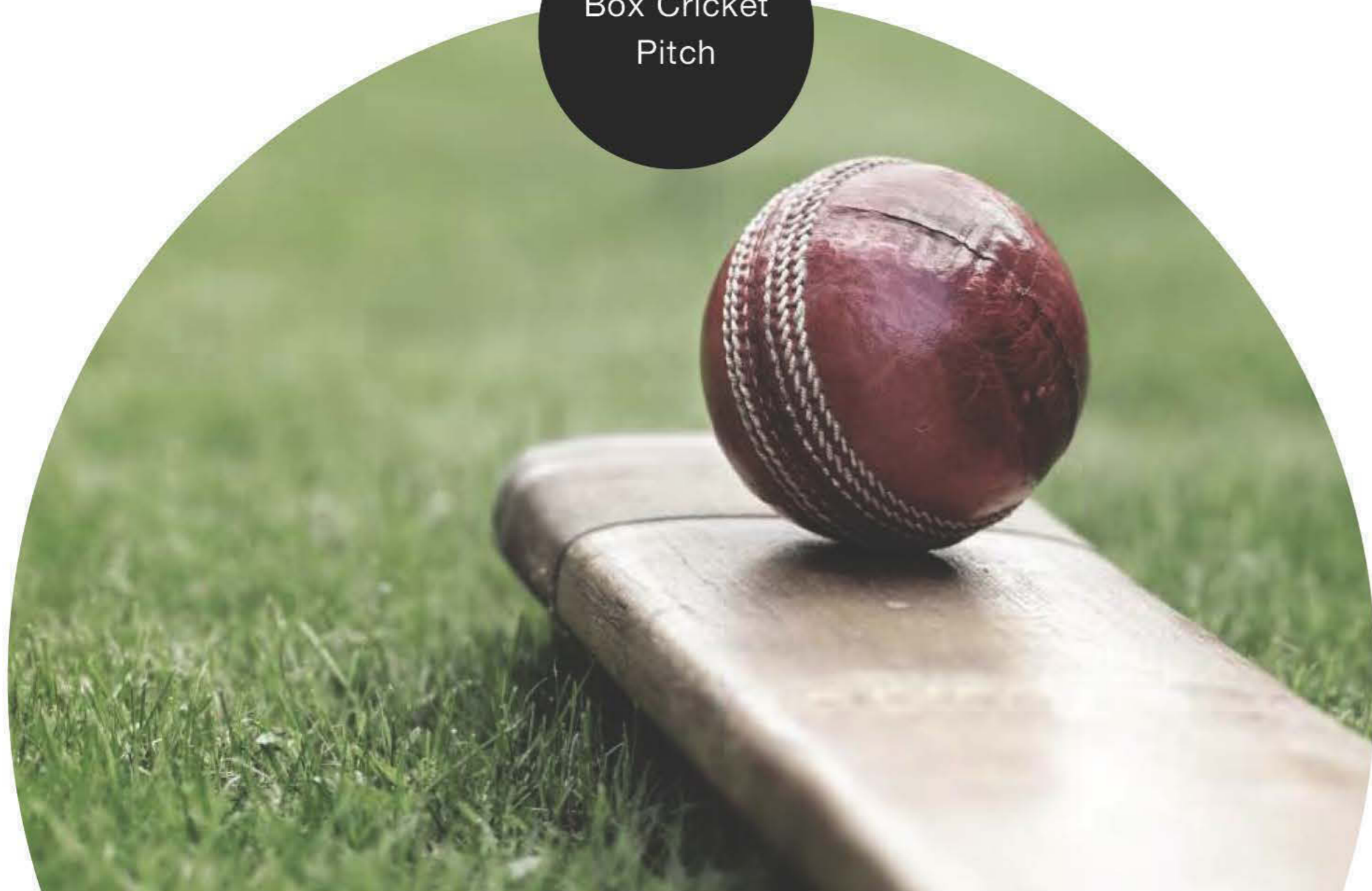
Barbecue
Alcove





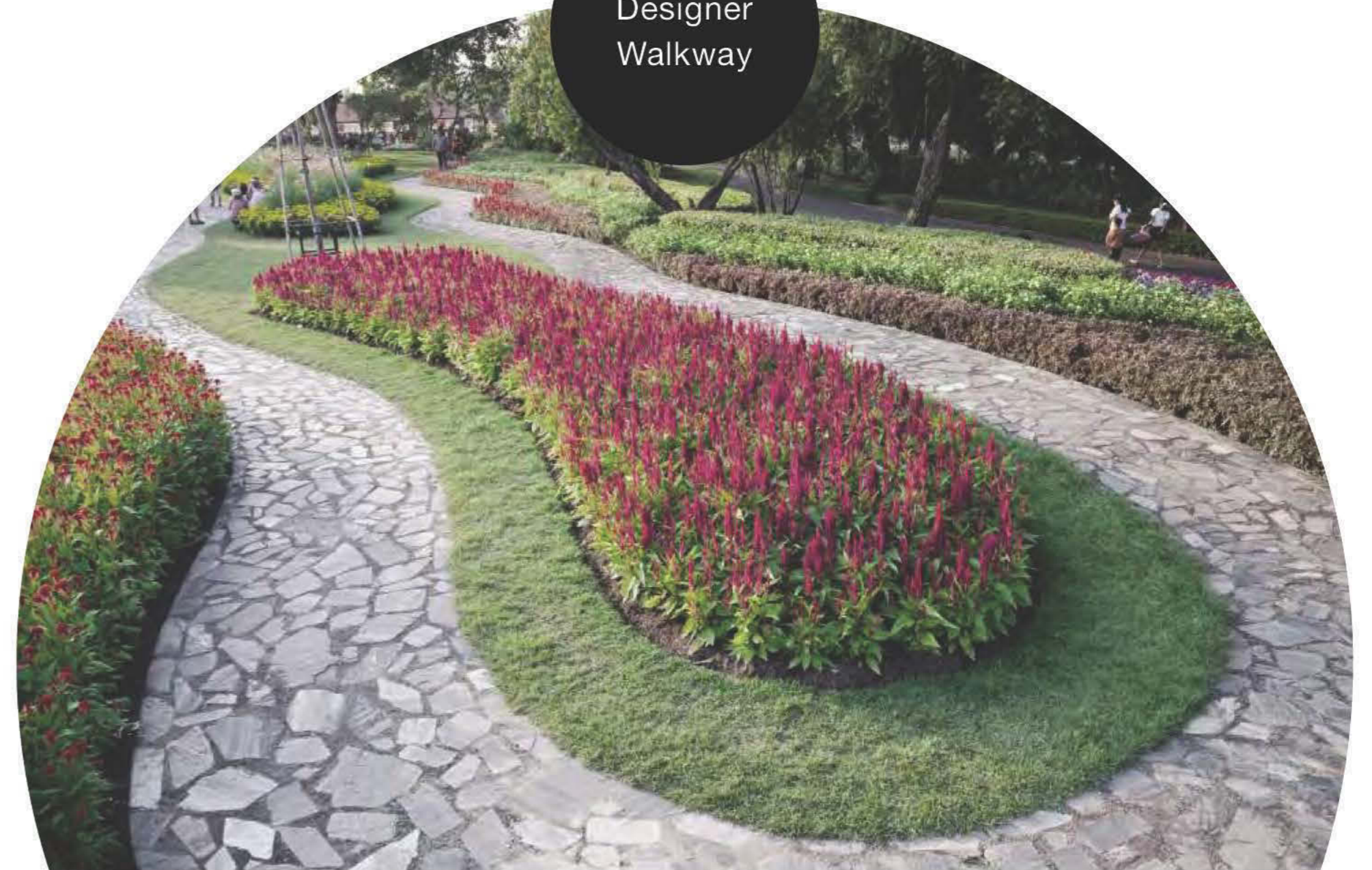
EXPERIENCE THE THRILL OF THE GAME,
ON THE 'SKY GROUND'.

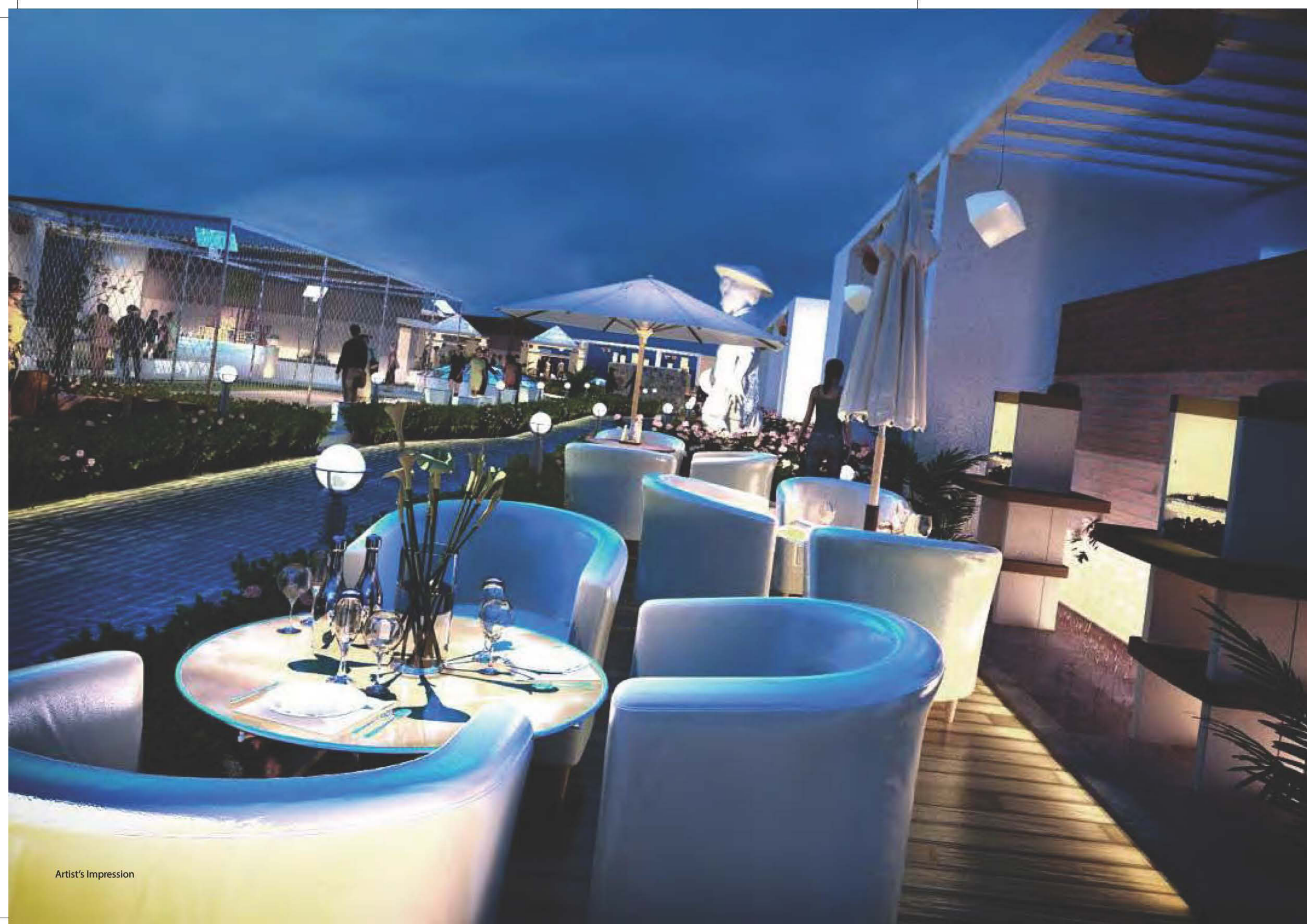
Box Cricket
Pitch



A WALK CAN CHANGE YOUR MOOD,
A TALK ALONG WITH IT CAN BE REFRESHING.

Designer
Walkway



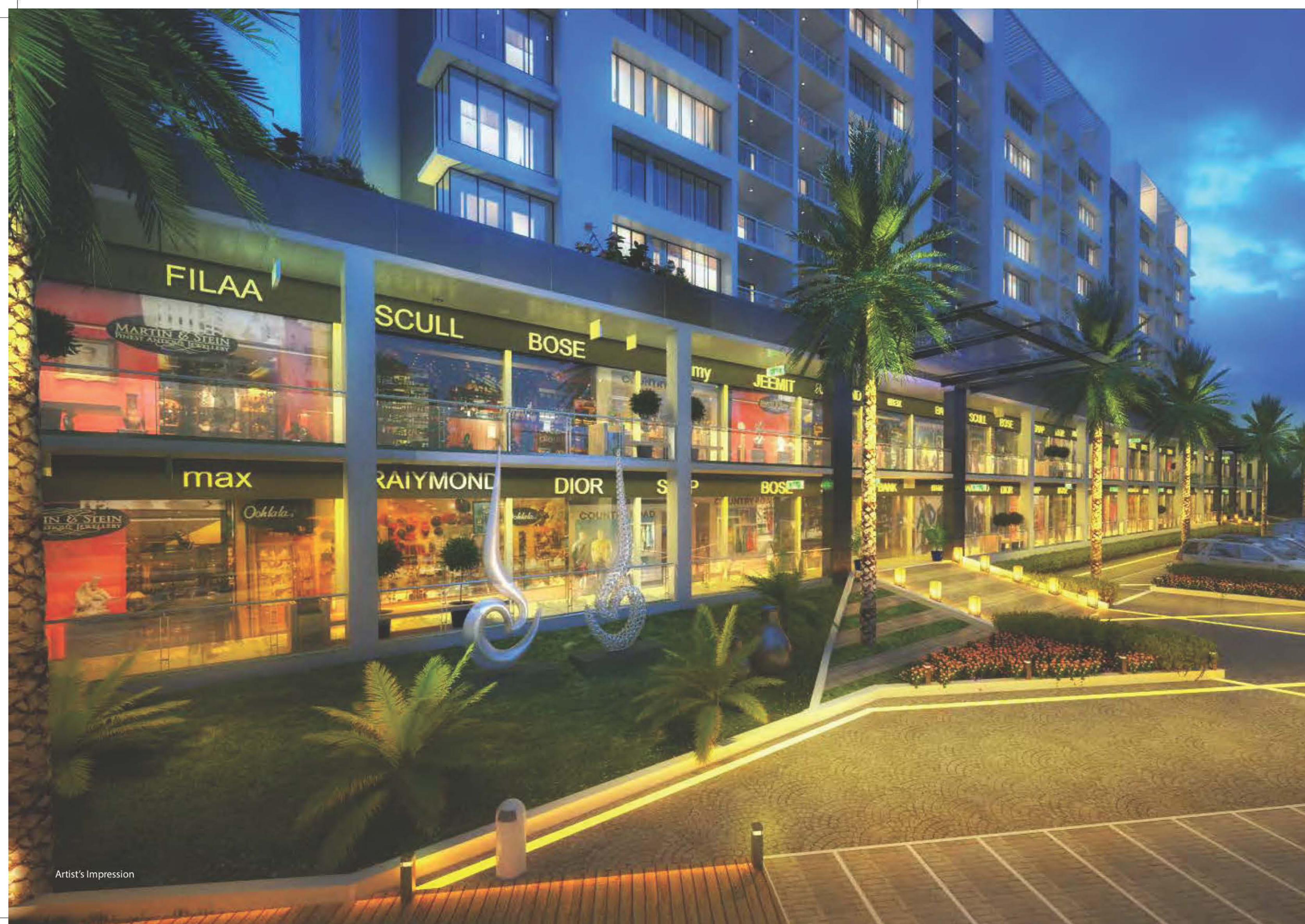


Artist's Impression



A CANVAS OF
SKY-LEVEL RECREATION
DESIGNED WITH
A NEW PERSPECTIVE
ON ENJOYMENT.





Artist's Impression



**SIGNATURE
RETAIL SPACES
WITH A CONTEMPORARY
OUTLOOK**



Two-level retail spaces with 80m grand frontage



A CANVAS FOR BUSINESS GROWTH AT VAPI.



At V2 Signature, let your business achieve growth and momentum with superior space advantage and maximum utility. Realize your ambitions on a canvas that supports and fosters development and generates maximum mileage for you.

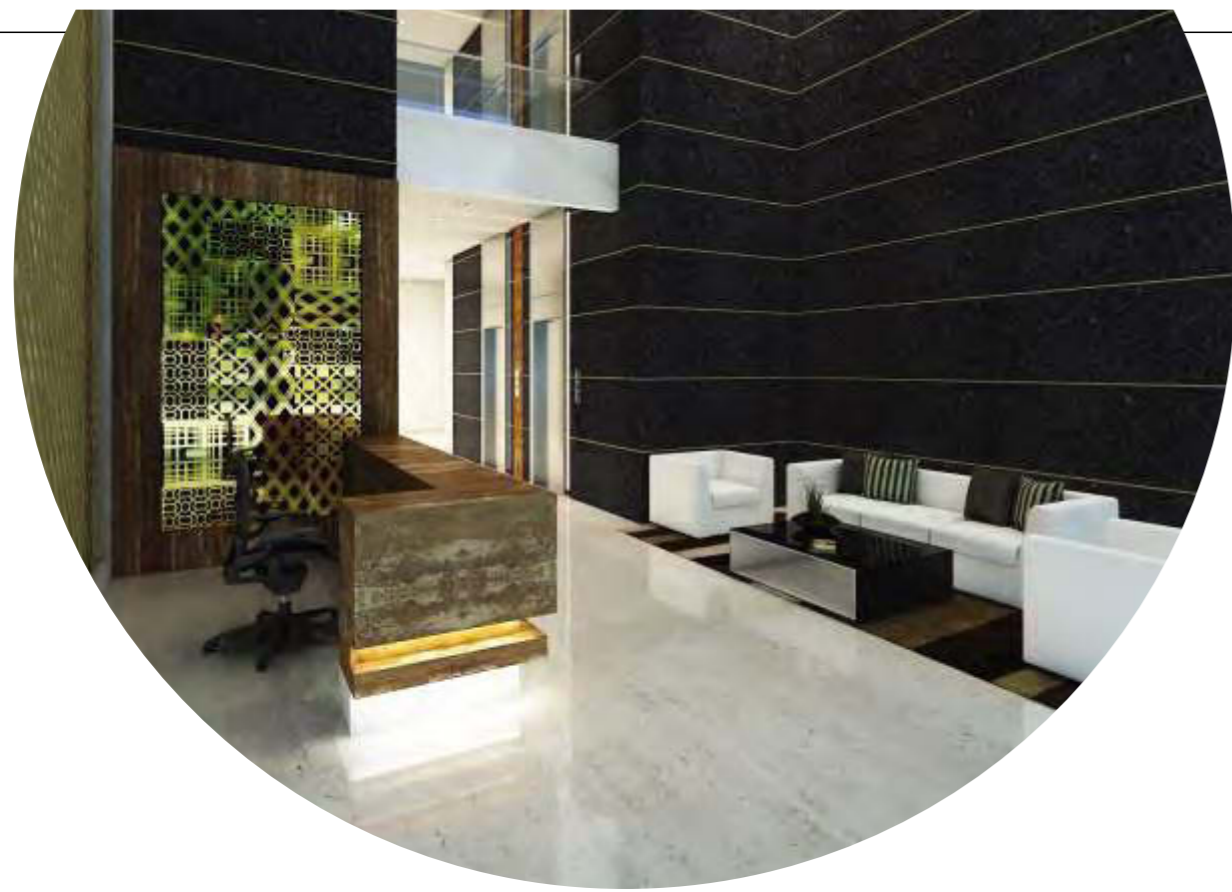
Project Hallmarks: Retail

- Two-level Retail Spaces of 2000-3000 Sq. Ft. •
- Clear glass facade for perfect display •
- Raw Shell Space available •
- Parking-free shop front •
- Separate Entry & Exit •

**SIGNATURE
EXPERIENCES WITH
BEST-IN-CLASS
AMENITIES.**



Artist's Impression



A GRAND EXPERIENCE WELCOMES YOU EVERY DAY.
Double Height Entrance Lobby



YOUR FAMILY AND YOUR HOME IS ALWAYS SECURED.
CCTV & Surveillance System



LEAVE YOUR WORRIES IN THE PARKING SPACE.
Basement + Ground Parking



NO MORE WAITING TO MEET YOUR LOVED ONES,
Hi-speed Branded Elevators





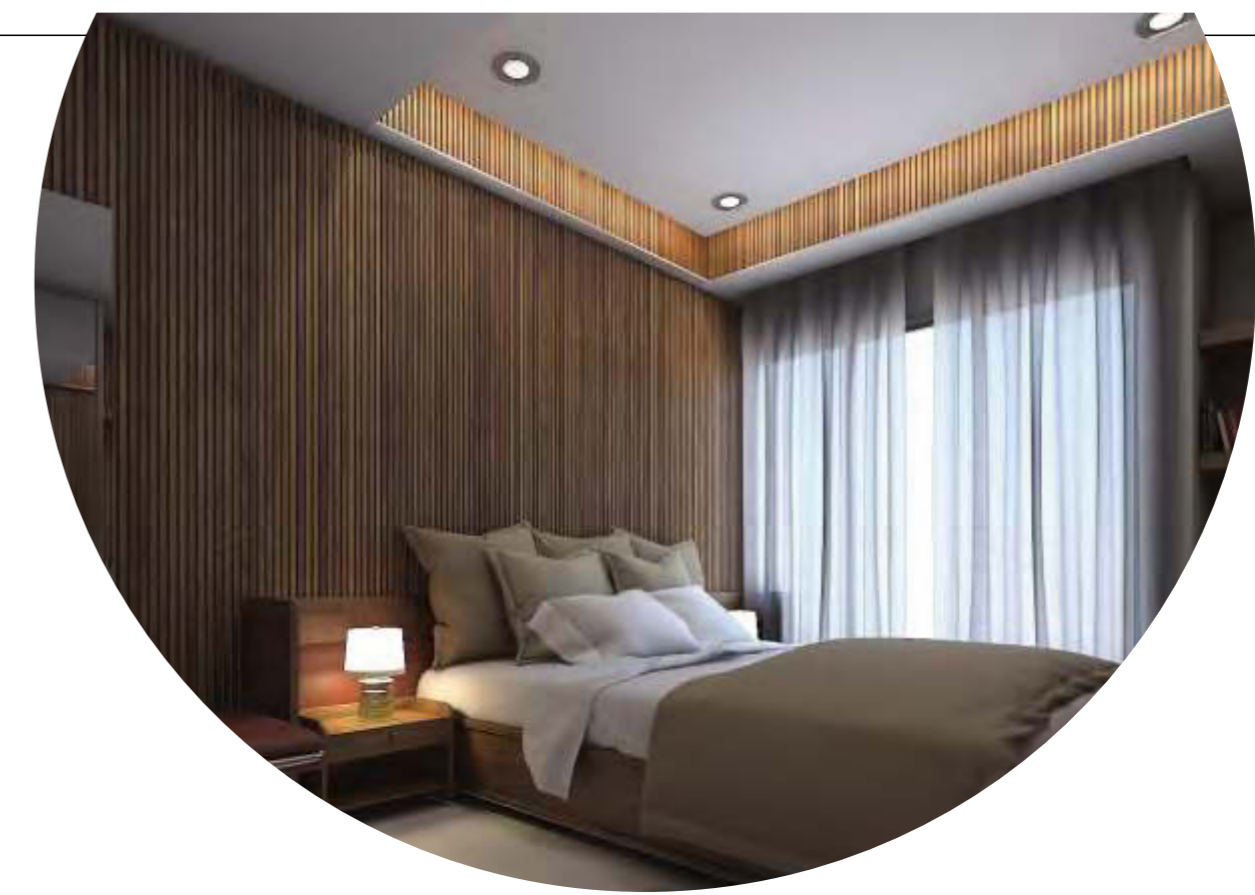
ADD A DASH OF LUXURY TO YOUR CULINARY EXPERIENCE.

Modular Kitchen



HAVE THE WORLD'S BEST DESIGNER BATH FIXTURES AT YOUR COMMAND.

Designer Bathroom with Branded Sanitaryware



REVEL IN THE LUXURY THAT BEFITS YOUR PREFERENCES.

Wooden Flooring in Master Bedroom



LET THE LIGHT AND THE COOL BREEZE PLAY INTO YOUR LIVING SPACE.

Designer French Windows



PROJECT AT A GLANCE

PROJECT HALLMARKS

RESIDENTIAL

- State-of-the-art 3 & 4 BHK Designer Residences
- Two G + 9 Towers with Modern Architecture
- Designed with International Level Finishes
 - Double Height Magnificent Lobby
 - 20,000 Sq. Ft. Terrace Recreation
- Basement + Ground Level Parking Spaces

COMMERCIAL

- Ground + 1 Storey Retail Spaces
- 80m Wide Frontage

LOCATION STANDPOINTS

- Vapi Railway Station - 1.7 kms
- National Highway 8 - 1.5 kms
- International Curriculum Schools - 1.5 kms
 - Rofell College - 3 kms
 - Hariya Hospital - 5 kms
 - Daman Airport - 6.7 kms
 - Jampore Beach - 9 kms

STRUCTURE & DESIGN

- Eco-friendly Earthquake Resistant Construction
- Well-planned layout with Maximum Space utilisation

PAINTS & FINISH

- Plaster + Putty/Gypsum Finish Walls
- Plastic Finish Paint in lobby and common areas

TOILETS & FIXTURES

- Jaguar or any other reputed make fittings in continental series with three in one shower mixer in all bathrooms
- European WC with seat cover and flushing system
- Duravit/Hindware or similar sanitary fittings

TILES & FLOORING

- High Quality Vitrified Tiles
- Vitrified tiles / Italian Marble in lobby

ELECTRICALS & FITTINGS

- Modular Switches of Roma/Anchor or equivalent
- 16-A Electric Power Points for washing machine, purifier, mixer, Microwave, etc
- Plumbing Connection for washing machine

KITCHEN & HARDWARE

- Quartz stone/Granite-built Platform with Twin Bowl Sink
- Provision for Gas Hob & Chimney

DOORS & WINDOWS

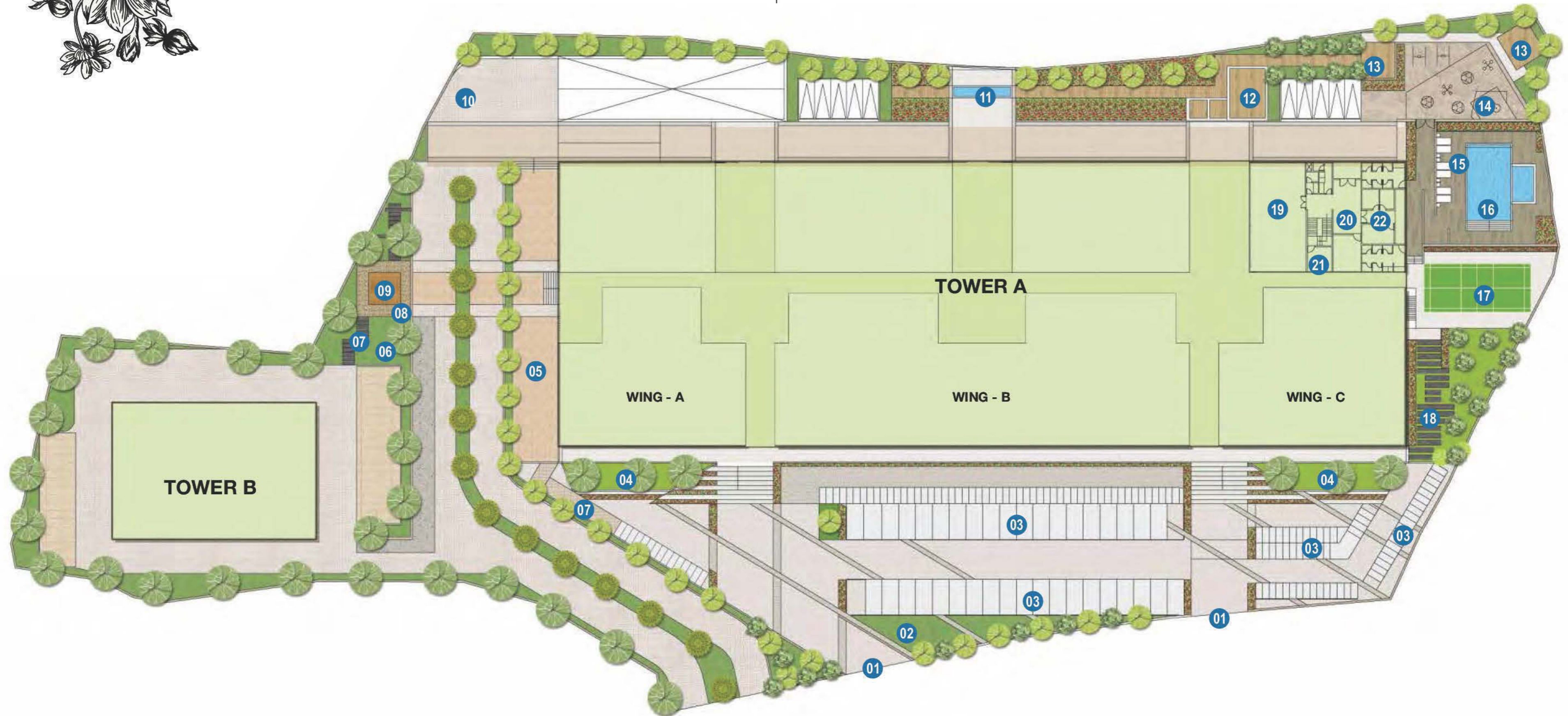
- Decorative Safety Grills
- Aluminium Sliding Window of heavy series with Float Glass
- Flush Door with wooden frame along with all hardware, locks and accessories in all rooms

MASTER PLAN



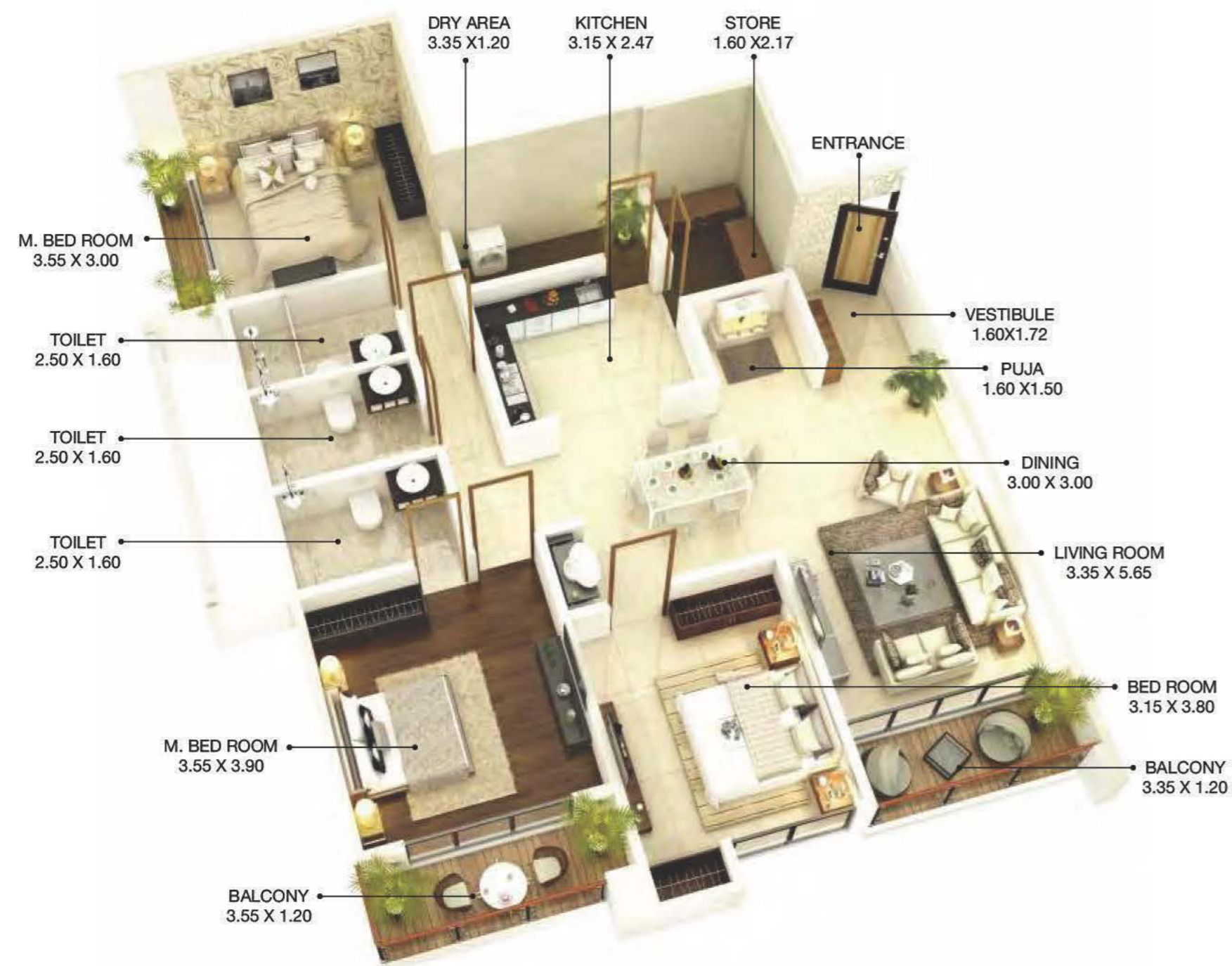
LEGENDS

- | | | | |
|------------------------|-------------------------|--------------------|--------------------|
| 01 ENTRY TO COMMERCIAL | 07 WALKWAY | 13 TIMBER DECK | 19 GYMNASIUM |
| 02 PLANTING AREA | 08 REFLEXOLOGY PATH | 14 KID'S PLAY AREA | 20 LOUNGE |
| 03 PARKING | 09 YOGA DECK | 15 POOL DECK | 21 GAME ROOM |
| 04 LAWN | 10 ENTRY TO RESIDENTIAL | 16 SWIMMING POOL | 22 STEAM & JACUZZI |
| 05 SEATING AREA | 11 WATER TABLE | 17 BADMINTON COURT | |
| 06 FITNESS STATION | 12 DECK WITH SEATING | 18 PATHWAY | |



UNIT PLAN

3 BHK



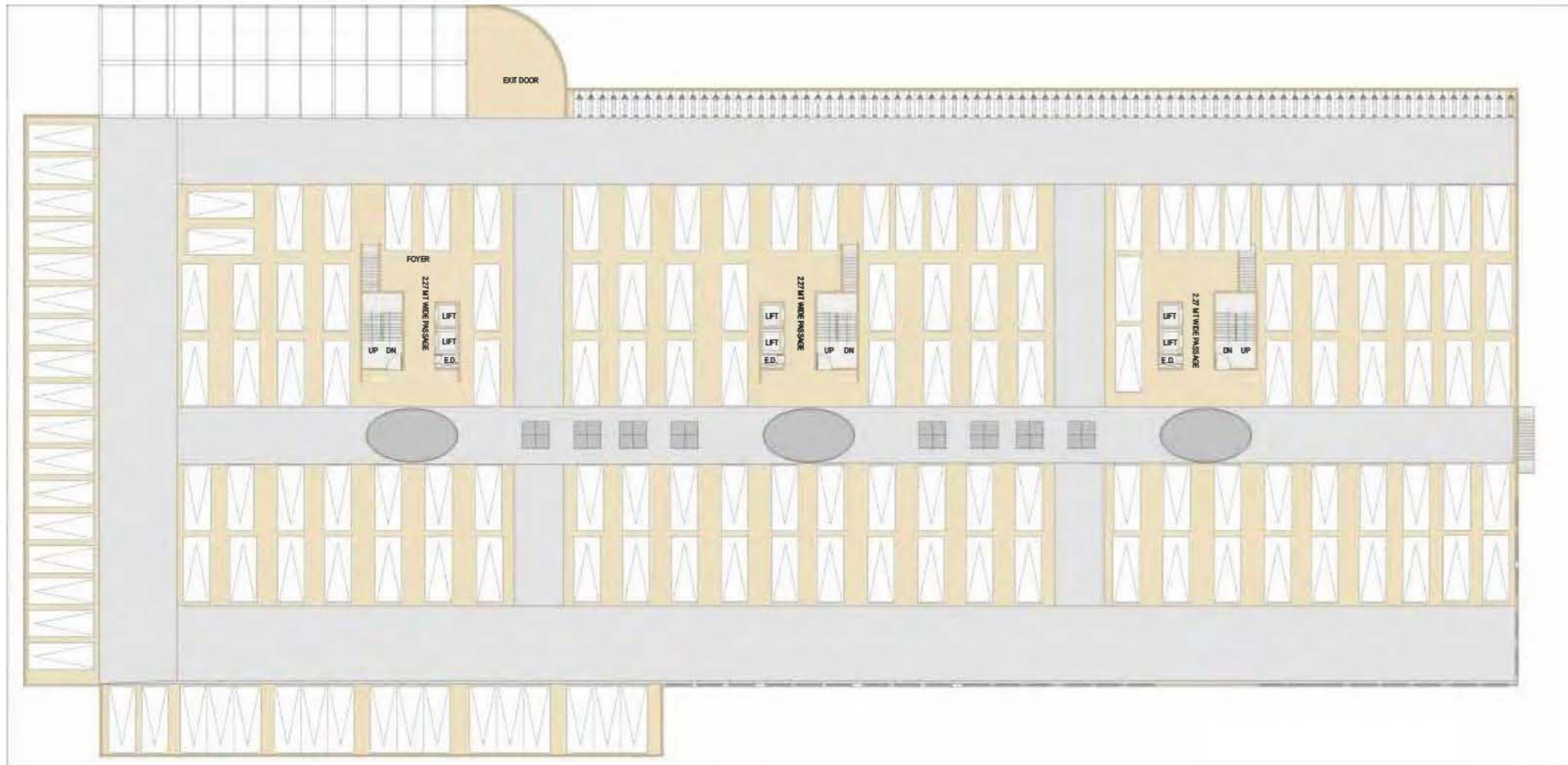
UNIT PLAN

4 BHK



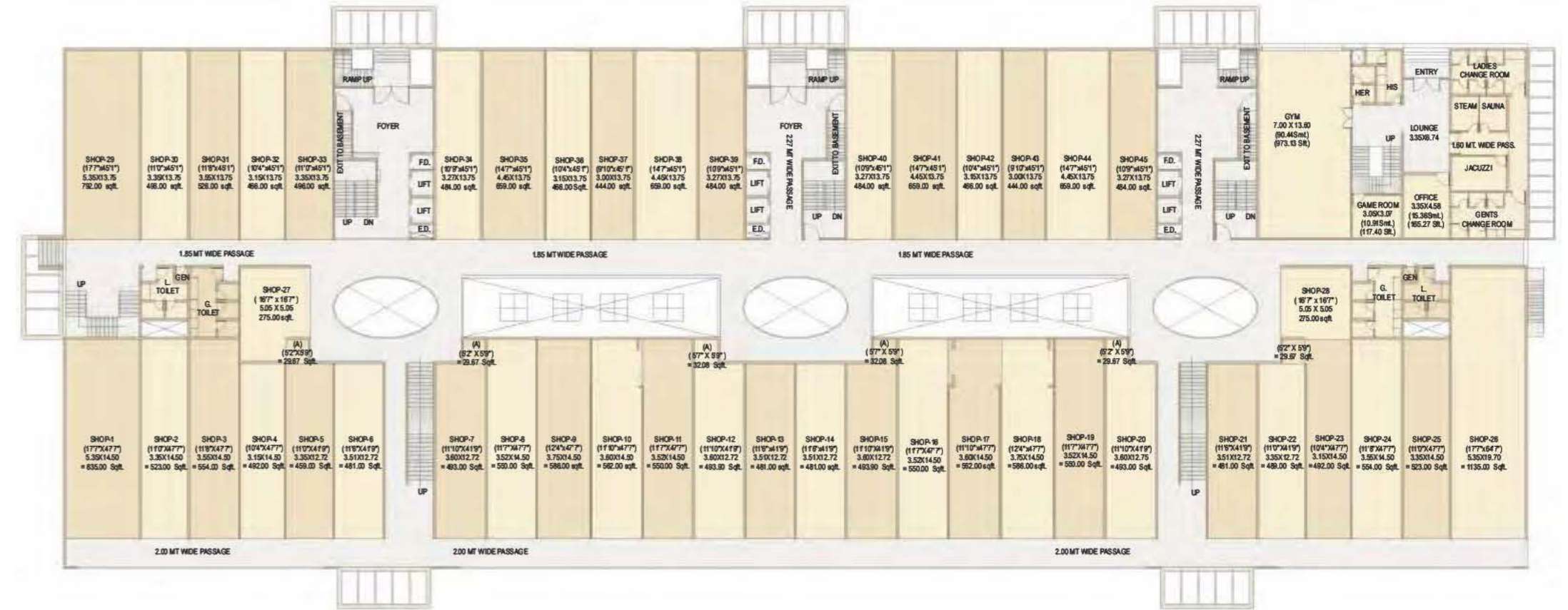
TYPICAL FLOOR PLAN

TOWER A - BASEMENT



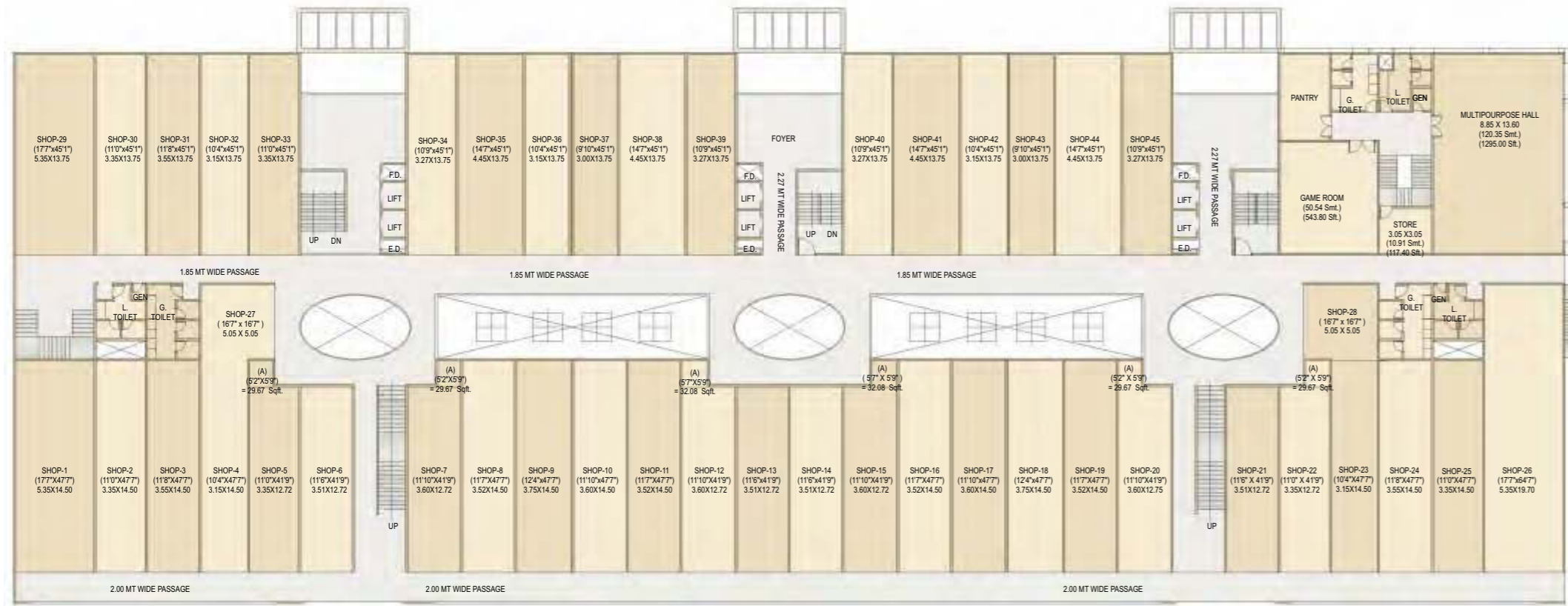
TYPICAL FLOOR PLAN

TOWER A - GROUND FLOOR



TYPICAL FLOOR PLAN

TOWER A - 1ST FLOOR



TYPICAL FLOOR PLAN

TOWER A - 2ND TO 9TH FLOOR





LIFE IS THE NEW LIFESTYLE STATEMENT

V2 Realty takes birth from not just initials of two names, name 1 & name 2, but it also symbolises combination of strengths, a culmination of ideas.

The group aims at creating a distinct landmarks that are a statement of lifestyle, class and luxury. Growing from strength to strength, V2 Realty aims at treading the path of quality, consistency & timely delivery.

WWW.V2LIFE.IN



LIVE A STATEMENT