





DESIGNED TO IMPRESS  
DESIGNED TO EMPOWER

SHOWROOMS | OFFICE SPACES



# THE BEST ADDRESS FOR YOUR BUSINESS

Fortune Landmark presents you with the most prime and prestigious address of Vapi. If location is the key to success in business, you are destined to be a winner.

## F FORTUNE LANDMARK





# THE LANDMARK OF SHOPPING

SHOP | DINE | PLAY

Fortune landmark is sure to emerge as a one stop destination shopping, offering a chance to find everything from apparels to accessories, electronics to gift articles and lifestyle items to household requirements under one roof.





# F FORTUNE LANDMARK

ENGAGEMENT RINGS  
It all starts with a YES!  
SHOP ENGAGEMENT RINGS

MADE IN INDIA  
**ROVER**  
WIP AW  
2050

Hira Panna Jewellers  
Collection

SWISSTONE  
Swiss Rose Gold plating  
Elegance with simplicity

Wranglerz Wranglerz Solution Solution Foot In Fastrack Deco Guess Guess Gucci Decoration Zawwari Pepe Jeans Gym PaP Cafe Buffalo Buffalo Crossword

Levis's Levis's VIVI VIVI Illiput Zaveri Bata Bata Crossword JBL JBL Fastrack Trend Trend Deco Armani I Pearl I Pearl Deco

Cafez Cafez American Home Sony Ps Game Converse Calvin Klein Calvin Klein Tanishq Tanishq Lonsdale Gucci Zara Zara Sportz Sportz Puma Puma



## A SENSATIONAL SHOPPING CENTRE

Be it a prime location, its stunning elevation or premium features and amenities, this fabulous project has all the elements to attract the customers.



## A PERFECT SHOWCASE FOR PREMIUM PRODUCTS



The glass façade of the shops gives your brand and products excellent visibility and attracts the shoppers. Stunning display for superb products.



# THE FUTURISTIC BUSINESS HUB OF VAPI

RESTAURANT | CAFÉTERIA

Not just the outside but even the interior of this commercial landmark is equally stunning. Making the experience of shopping and working here very pleasant.





# THE LANDMARK OF BUSINESS



CORPORATE OFFICE | BANKING SPACE

The forward-thinking corporate space of Fortune Landmark inspire excellence and success. These brilliantly planned, spacious offices paves the way for your future business empire.





# FOR THOSE WHO DREAM BIG

INSURANCE OFFICE | SHARED OFFICE

Whether you are entering into a business or looking to expand it, this is an opportunity that comes rarely. A perfect business space for those who dare to go beyond the ordinary.





DESIGNED BY  
VISIONARIES FOR THE  
**VISIONARIES**



The world of shopping and business awaits you here. Whatever may be the kind or size of your business, Fortune Landmark is a smart business investment.

# BASEMENT PLAN



# GROUND FLOOR PLAN

SHOP	DIMENSION
01	13' 3" X 53' 0"
02 TO 06	10' 0" X 53' 0"
07, 08	10' 0" X 49' 9"
09 TO 17	10' 0" X 53' 0"
18	10' 0" X 45' 2.5"
19	10' 0" X 31' 7.5"

SHOP	DIMENSION
20	15' 9.5" X 19' 4.5"
21 TO 28	10' 0" X 47' 10"
29 TO 39	10' 0" X 46' 0"
40 TO 44	10' 0" X 35' 1.5"
45	11' 9" X 35' 1.5"
46	10' 0" X 34' 9"

SHOP	DIMENSION
47	10' 0" X 31' 4.5"
48 TO 51	20' 0" X 10' 0"
52	11' 9" X 17' 6"
53 TO 57	10' 0" X 24' 0"
58 TO 70	10' 0" X 25' 9"
71	12' 0" X 19' 3"

SHOP	DIMENSION
72 TO 77	10' 0" X 31' 3"
78 TO 82	10' 0" X 30' 10.5"
83	10' 0" X 25' 6"
84	10' 0" X 17' 10.5"
85	17' 0" X 15' 3"



# 1ST FLOOR PLAN

SHOP	DIMENSION
101	12' 10.5" X 52' 7.5"
102 TO 106	10' 0" X 47' 0"
107,108	10' 0" X 43' 9"
109 TO 116	10' 0" X 47' 0"
117	10' 0" X 43' 4.5"

SHOP	DIMENSION
118	36' 0" X 37' 6"
119 TO 126	10' 0" X 41' 10"
127 TO 137	10' 0" X 40' 0"
138 TO 142	10' 0" X 34' 9"
143	11' 9" X 31' 0"

SHOP	DIMENSION
144	20' 4.5" X 31' 0"
145 TO 148	20' 0" X 10' 0"
149	11' 9" X 17' 6"
150 TO 154	10' 0" X 24' 0"
155 TO 167	10' 0" X 23' 7.5"

SHOP	DIMENSION
168	12' 4.5" X 17' 1.5"
169 TO 174	10' 0" X 28' 4.5"
175 TO 179	10' 0" X 28' 0"
180	10' 0" X 27' 4.5"
181	10' 0" X 19' 4"



# 2ND FLOOR PLAN

SHOP	DIMENSION
201	12' 10.5" X 52' 7.5"
202 TO 206	10' 0" X 52' 7.5"
207, 208	10' 0" X 49' 4.5"
209 TO 216	10' 0" X 52' 7.5"
217	10' 0" X 49' 0"

SHOP	DIMENSION
218	20' 0" X 45' 0"
219 TO 226	10' 0" X 41' 10"
227 TO 237	10' 0" X 40' 0"
238 TO 242	10' 0" X 34' 9"
243	11' 9" X 31' 0"

SHOP	DIMENSION
244	20' 4.5" X 31' 0"
245 TO 248	20' 0" X 10' 0"
249	11' 9" X 17' 6"
250 TO 254	10' 0" X 24' 0"
255 TO 267	10' 0" X 23' 7.5"

SHOP	DIMENSION
268	12' 0" X 22' 9"
269 TO 274	10' 0" X 28' 4.5"
275 TO 279	10' 0" X 28' 0"
280	10' 0" X 27' 4.5"
281	10' 0" X 19' 4"



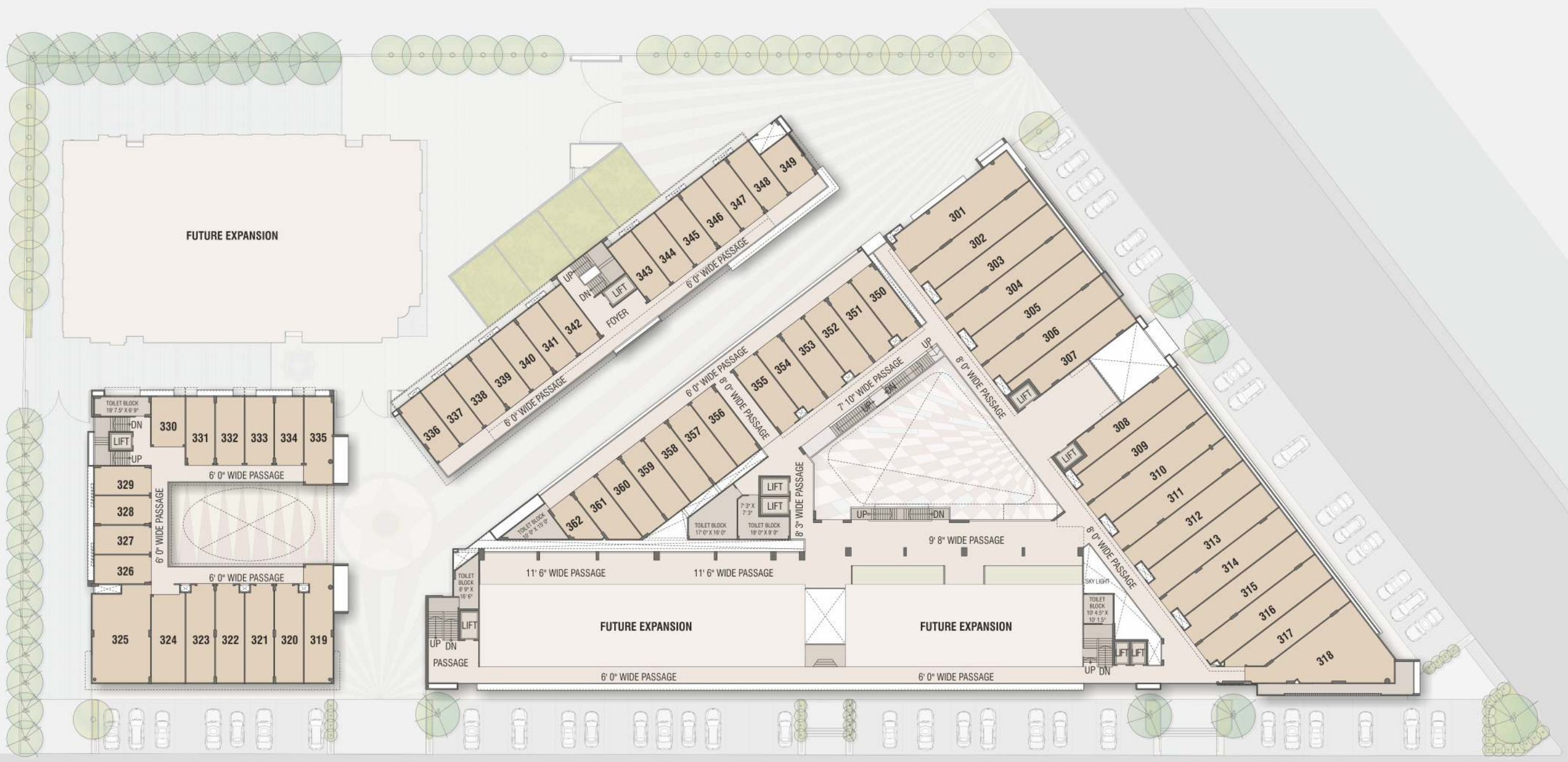
# 3RD FLOOR PLAN

SHOP	DIMENSION
301	12' 10.5" X 52' 7.5"
302 TO 306	10' 0" X 52' 7.5"
307, 308	10' 0" X 49' 4.5"
309 TO 316	20' 6" X 52' 7.5"
317	10' 0" X 49' 0"

SHOP	DIMENSION
318	20' 6" X 45' 0"
319	10' 0" X 41' 4"
320 TO 323	10' 0" X 34' 9"
324	11' 9" X 31' 0"
325	20' 4.5" X 31' 0"

SHOP	DIMENSION
326 TO 329	20' 0" X 10' 0"
330	11' 9" X 17' 6"
331 TO 334	10' 0" X 24' 0"
335	10' 0" X 30' 7.5"
336 TO 348	10' 0" X 23' 7.5"

SHOP	DIMENSION
349	12' 0" X 17' 1.5"
350 TO 355	10' 0" X 28' 4.5"
356 TO 360	10' 0" X 28' 0"
361	10' 0" X 27' 4.5"
362	10' 0" X 19' 4"



## BUILDING FEATURES

- High visibility and easy access from approach road 30 ft both side
- Uniquely designed to gain maximum natural light and ventilation
- Ample parking space provision through surface parking & huge basement
- Beautiful style of landscaping and architecture
- Earthquake resistant, R.C.C. frame structure
- Easy connectivity to highway
- 24 x 7 security service
- 24 hour standard power backup facility through silent generators

## SPECIFICATION

- Floor Heights**
  - Ground floor - 13' 0"
  - 1st floor - 12' 6"
  - 2nd floor - 12' 6"
  - 3rd floor - 12' 6"
- Entrance Foyer**
  - Elegant Entrance Foyer with magnificent ambience.
  - Ground floor plaza covered with ambience enhancing polycarbonate dome
- Passages**
  - Vitrified good tiles
- Elevation**
  - Aluminum composite panel & toughened glass glazed wall excellent elevation
- Staircase**
  - Good quality staircase
- Parking**
  - Ample parking at single basement and ground level
  - Suitable paver blocks for parking areas
- Flooring**
  - Vitrified 1st quality 24" x 24" flooring

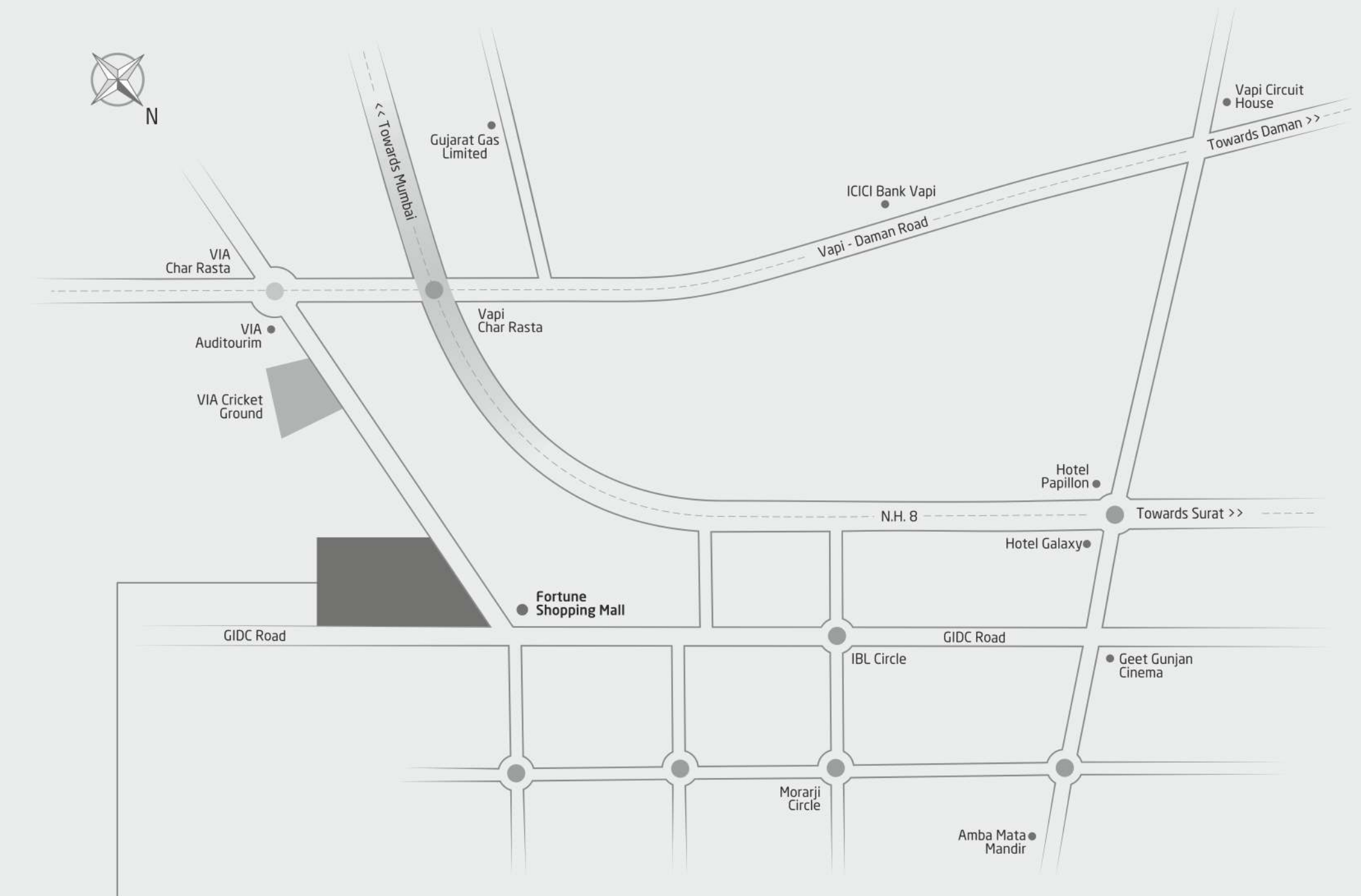
## INTERIOR FINISHES

- Wall Finish**
  - Internal walls finished with putty coat on mala plaster
- Flooring**
  - Vitrified Granamite tiles 24" x 24"
- Shutter**
  - Smoothly operating galvanized iron rolling shutter
- Windows**
  - Anodized aluminum section sliding windows

## EXTERNAL FINISHES

- Electrification**
  - Modular switches with I.S.I. standard fittings of good quality
  - Concealed electrification with adequate points
  - Internet & Intercom points in each unit.
  - Electric meter provided
- Generator Back up**
  - Generator for Sufficient points in common passage area & utilities
- Elevators**
  - High standard auto lift with optimum capacity
- Terrace**
  - Water Proofing on terrace with suitable china mosaic flooring finish
- CCTV Camera**
  - CCTV camera in common areas such as passage area of all floors, basement parking, terrace, margin areas and foyer with connection at security

This brochure is not to be treated as part of the document and is for an easy display of the project.



**F**  
**FORTUNE**  
**LANDMARK**  
 THE BUSINESS DISTRICT

SITE ADDRESS :  
 FORTUNE LANDMARK,  
 165/A/3, NEAR VIA,  
 OPP. VISHAL MEGA MART,  
 GIDC, VAPI - 396195

DEVELOPER  
**SHRI BALAJI**  
**ENTERPRISE**

ARCHITECT  
  
 ॥ नमो भगवते वासुदेवाय ॥

STRUCTURAL ENGINEER  
  
**DUCON**  
 CONSULTANTS PRIVATE LIMITED



**FORTUNE**  
**DREAM - CON**

[www.fortunedreamcon.com](http://www.fortunedreamcon.com)

RERA NO. PR/GJ/VALSAD/PARDI/Others/CAA03410/140918